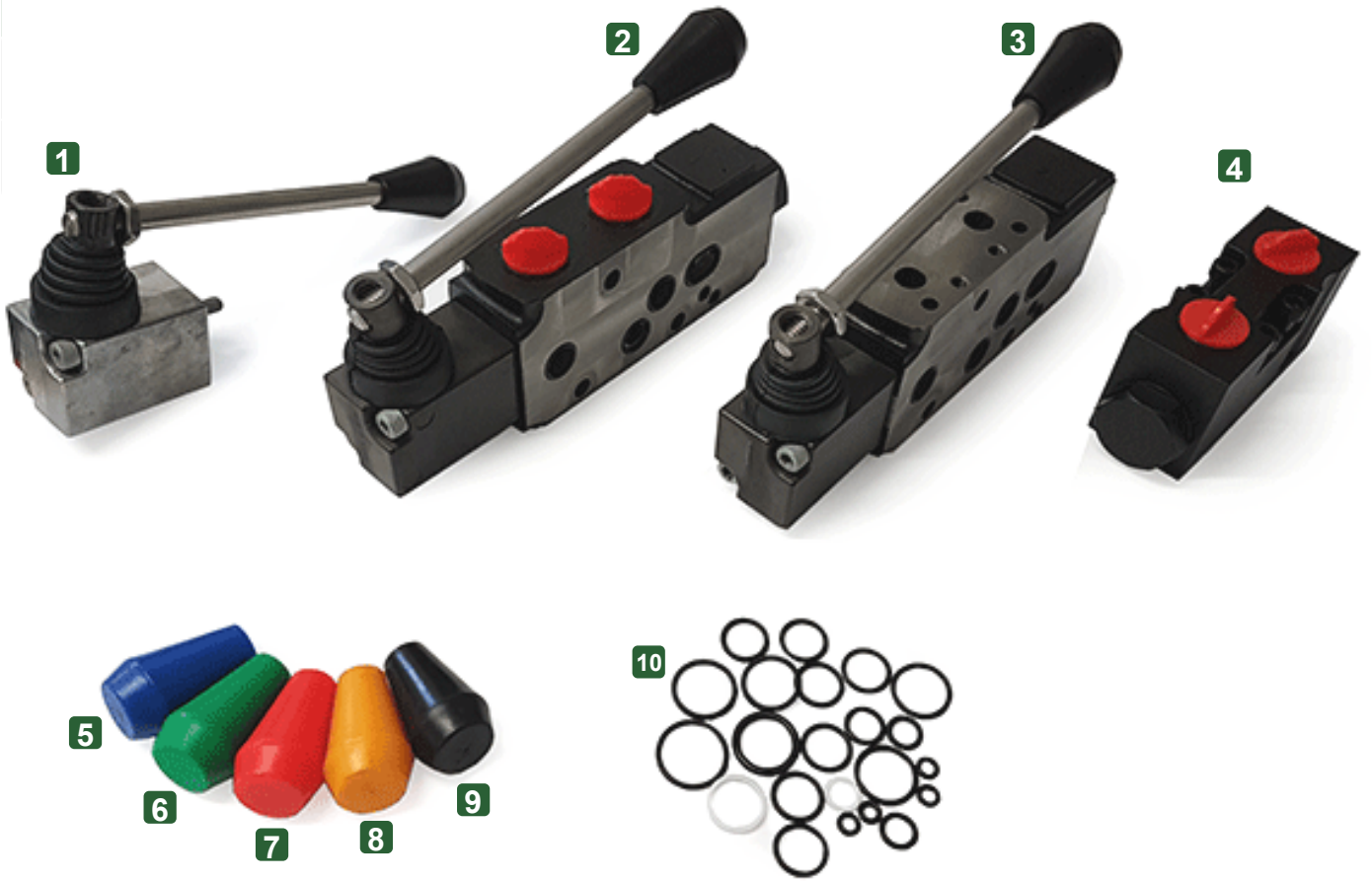


Hydraulic

Hydraulic Valve Banks

2
1
TE



	Part Number	Description	OEM Ref
1	CS17-301	Pivot/Lever Box, c/w Handle (2 Bolt)	1210-100
2	CS17-302	Sectional Valve Slice (Double Acting)	1210-037
3	CS17-303	Sectional Valve Slice, Machined Top (Double Acting)	
4	CS17-304	Service Port Relief	1210-119
5	CS17-352	Blue Knob	1210-117
6	CS17-353	Green Knob	1210-116
7	CS17-354	Red Knob	1210-114
8	CS17-355	Yellow Knob	1210-115
9	CS17-356	Black Knob	1210-113
10	CS10-083	Valve Slice Seal Kit	1210-034

Manufacturers and other wholesalers part numbers & names are used for cross reference purpose only and do not imply anything about the origin or manufacturer of the products

Hydraulic Valve Banks & QR Couplings



2
2
TE

	Part Number	Description	OEM Ref
1	CS17-400	3/8" Male x 1/4" Male Adaptor	1260-012
2	CS17-401	3/8" Bonded Washer	1270-002
3	CS04-048	1/2" Quick Release Coupling (QRC) Male/Probe	1260-001
4	CS04-048A	1/2" Quick Release Coupling (QRC) Female/Carrier	1260-002
5	CS04-018	3/4" Quick Release Coupling (QRC) Male/Probe	1260-003
6	CS04-019	3/4" Quick Release Coupling (QRC) Female/Carrier	1260-004

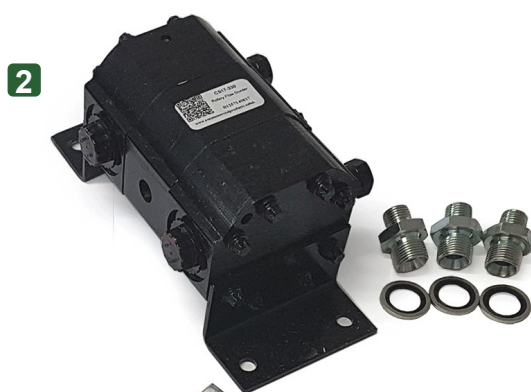
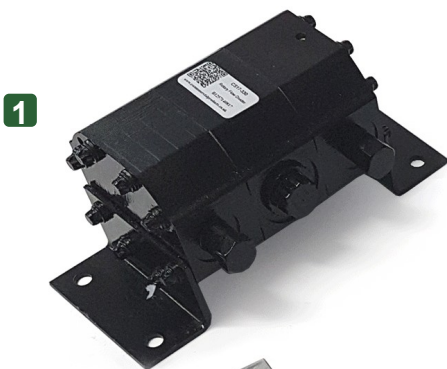


	Part Number	Description	OEM Ref
1	CS17-300	Pivot/Lever Box (Monoblock, 4 Bolt)	1210-500
2	CS17-342	Black Knob	1210-512
3	CS17-343	Blue Knob	1210-513
4	CS17-344	Red Knob	1210-514
5	CS17-345	Green Knob	1210-515
6	CS17-346	Yellow Knob	1210-516
7	CS17-340	Handle, 150mm (Hyd Valve)	1210-506
8	CS17-341	Handle, 170mm (Hyd Valve)	1210-507
9	CS17-337	Spring Return Kit Assembly	1210-502
10	CS17-358	Pilot Control Assembly (Hydraulic Mono Block)	1210-534

Manufacturers and other wholesalers part numbers & names are used for cross reference purpose only and do not imply anything about the origin or manufacturer of the products

Hydraulic Flow Dividers & Double Check Valves

2
3
TE



	Part Number	Description	OEM Ref
1	CS17-330	Rotary Flow Divider	1290-109
2	CS17-330KIT	Rotary Flow Divider Kit, 1 x Flow divider, 3 x Adaptors, 3 x Bonded Washers	
3	CS17-310	Flow Divider (Spool Type)	1290-103
4	CS17-310KIT	Flow Divider Kit (Spoon Type), 1 x Flow divider, 3 x Adaptors, 3 x Bonded Washers	
5	CS17-320	Double Check Valve	1210-036
6	CS17-320KIT	Double Check Valve Kit, 1 x Double Check Valve, 4 x Adaptors, 4 x Bonded Washers	
	CS17-400	3/8" Male x 1/4" Male Adaptor	1260-012
	CS17-401	3/8" Bonded Washer	1270-002

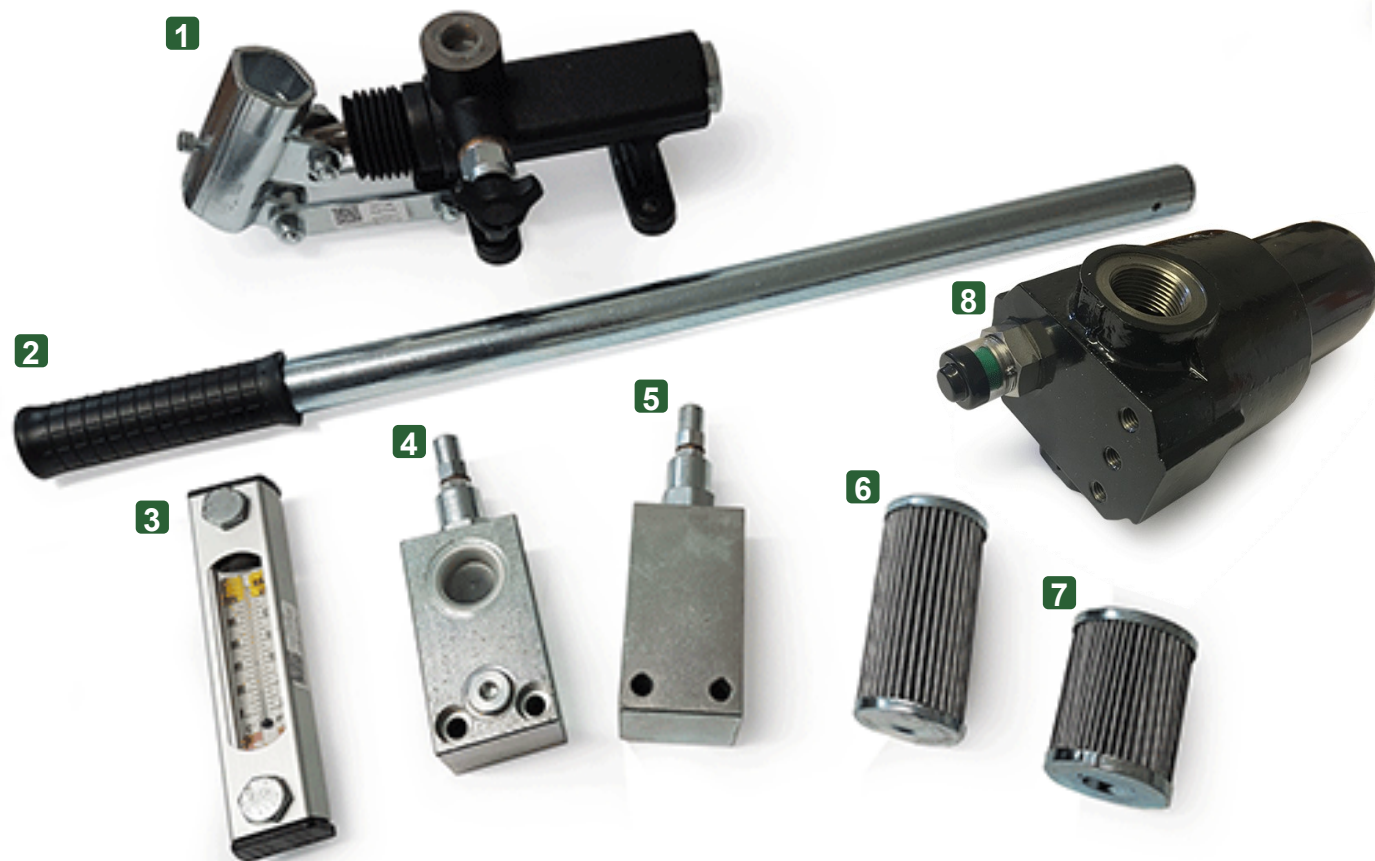
Manufacturers and other wholesalers part numbers & names are used for cross reference purpose only and do not imply anything about the origin or manufacturer of the products

Hydraulic Pumps, Hoses, Filters & Relief Valves



2
4
TE

	Part Number	Description	OEM Ref
1	CS17-311	4 Bolt PTO Pump	
2	CS17-318	Hydraulic Pump (PTO) 4 Bolt	
3	CS17-316	Hose Assembly 133" (Retractable Loading Ramp)	1230-042
4	CS17-317	Hose Assembly 125" (Retractable Loading Ramp)	1230-043
5	CS07-104	Cable/Pipe Guard (Retractable Loading Ramp)	HCKZ1113



	Part Number	Description	OEM Ref
1	CS17-306	Peak Tilt Hand Pump (Hydraulic)	
2	CS17-306H	Handle (Peak Tilt Pump)	
	CS17-306PH	Peak Tilt Hand Pump, c/w Handle	1290-001
3	CS17-307	Fluid Level Gauge 5" (Oil Tank)	
4	CS17-348	In-Line Relief Valve 3/4" BSP 220 bar	
5	CS17-347	In-Line Relief Valve 1/2" BSP 300bar	
6	CS17-362E	Filter Element	1280-003
7	CS17-363E	Filter Element	1280-113
8	CS17-362	Filter Housing, c/w Element & Indicator	1280-002

Manufacturers and other wholesalers part numbers & names are used for cross reference purpose only and do not imply anything about the origin or manufacturer of the products